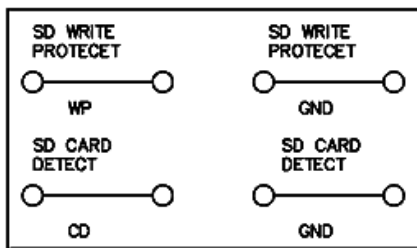
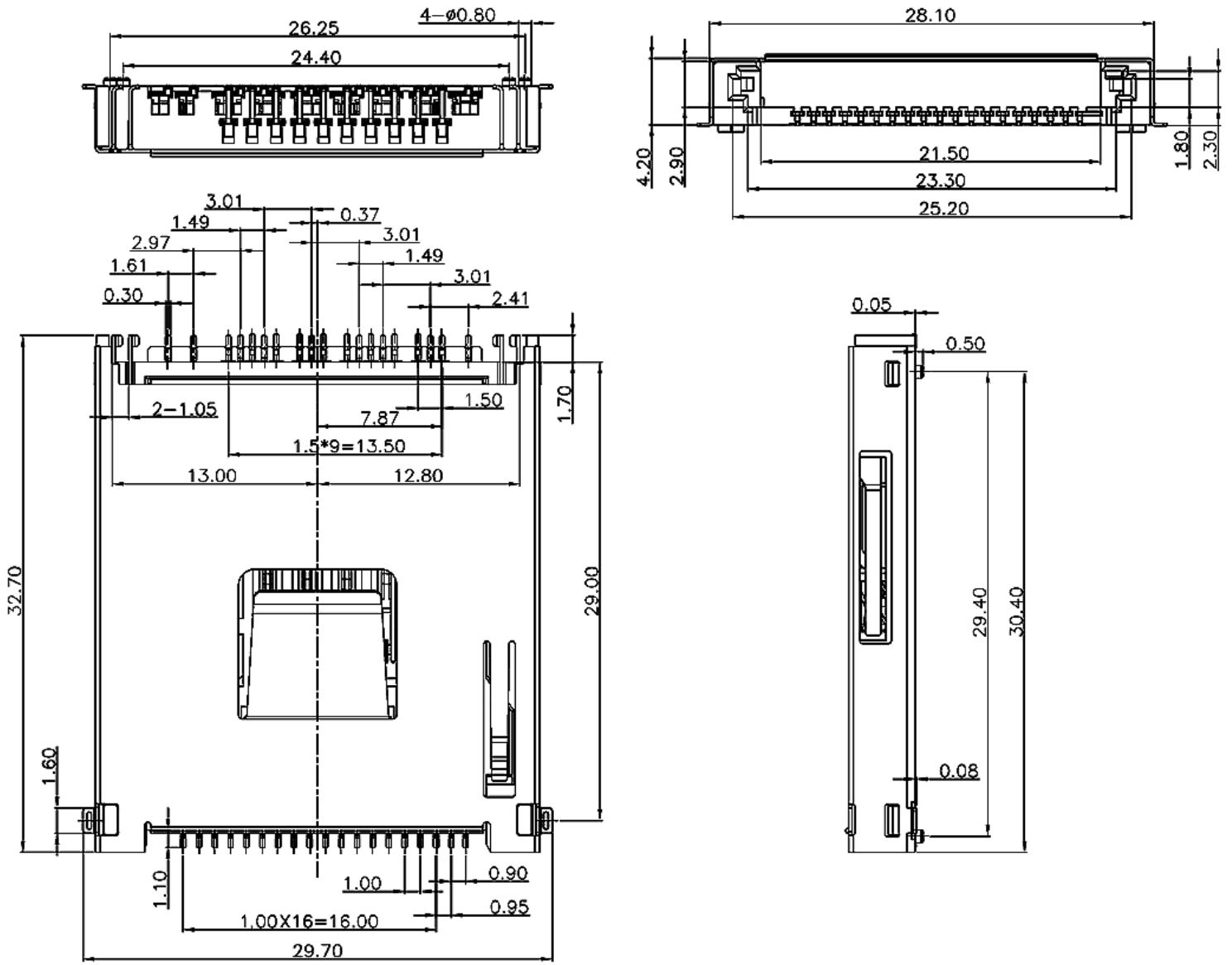
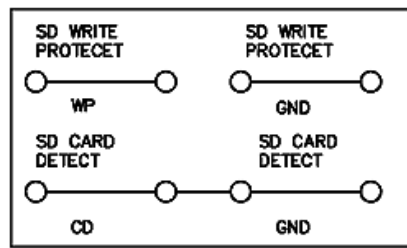


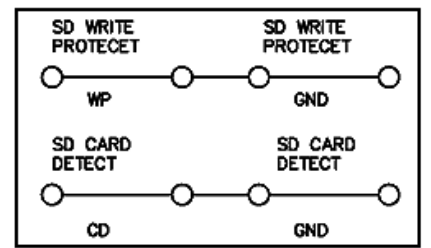
尺寸



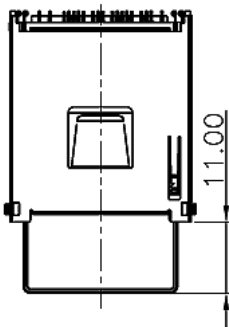
WITHOUT SD CARD



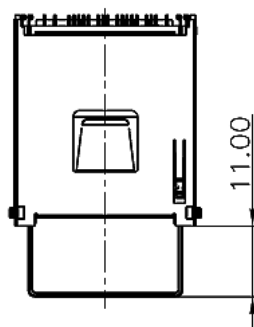
SD CARD INSERTED
WRITE PROTECT: LOCK



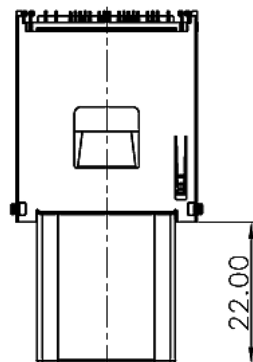
SD CARD INSERTED
WRITE PROTECT: UNLOCK



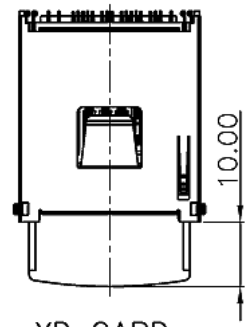
SD CARD
SCALE 1=4



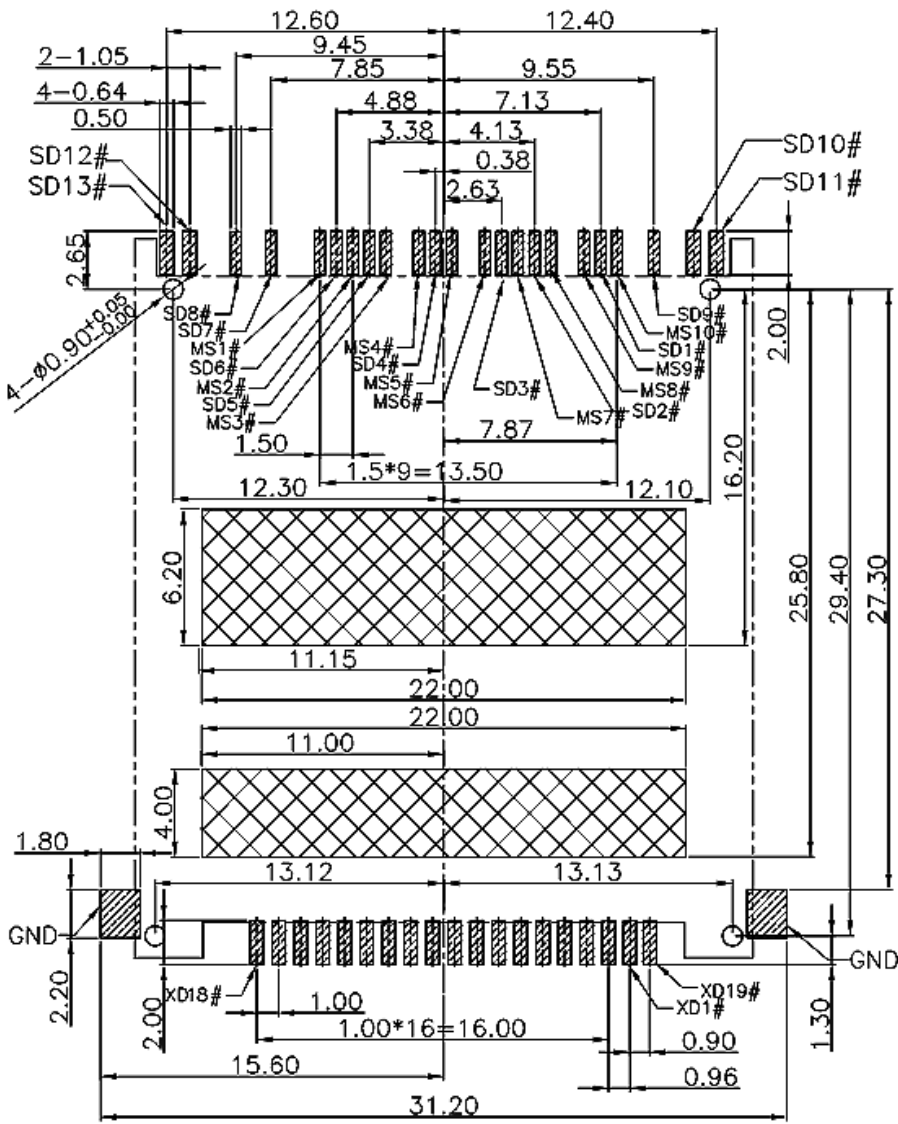
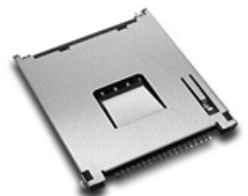
MMC CARD
SCALE 1=4



MS CARD
SCALE 1=4



XD CARD
SCALE 1=4



XD DEFINITION

PIN NO.	FUNCTION
1/19	GND/(CARD DETECT)
2	READY/BUSY
3	READ ENABLE
4	CARD ENABLE
5	COMMAND LATCH ENABLE
6	ADDRESS LATCH ENABLE
7	WRITE ENABLE
8	WRITE PROTECT
9	GND
10	DATA0
11	DATA1
12	DATA2
13	DATA3
14	DATA4
15	DATA5
16	DATA6
17	DATA7
18	VCC

SD CARD

PIN#	NAME	DESCRIPTION
1	CD/DAT3	CARD DETECT/DATA LINE BIT3
2	CMD	COMMAND/RESPONSE
3	VSS1	SUPPLY VOLTAGE GROUND
4	VDD	SUPPLY VOLTAGE
5	CLK	CLOCK
6	VSS2	SUPPLY VOLTAGE GROUND
7	DAT0	DATA LINE BIT0
8	DAT1	DATA LINE BIT1
9	DAT2	DATA LINE BIT2

MMC CARD

PIN#	NAME	DESCRIPTION
1	RSV	RESERVED FOR FUTURE USE
2	CMD	COMMAND/RESPONSE
3	VSS1	SUPPLY VOLTAGE GROUND
4	VDD	SUPPLY VOLTAGE
5	CLK	CLOCK
6	VSS2	SUPPLY VOLTAGE GROUND
7	DAT	DATA

PIN#	NAME	DESCRIPTION
1	VSS	VSS
2	BS	SERIAL PROTOCOL BUS STATE SIGNAL
3	DATA1	DATA1
4	DATA0	DATA0
5	DATA2	DATA2
6	INS	STICK INSERTION/EXTRACTION DETECT-TERMINAL
7	DATA3	RESERVED
8	SCLK	SERIAL PROTOCOL CLOCK SIGNAL
9	VCC	VCC
10	VSS	VSS